

Construction is Continuing on Phase 1 & 3A of Roadway Improvements To US 70 North Main Street in Las Cruces

Update as of [February 16, 2024](#)

NOTE: All construction is weather permitting and is subject to changes without notice.

CONTACT for questions and concerns: **Patti Watson, 505-245-3134 office; 505-269-9691 cell;**
pattiw@cwastrategic.com

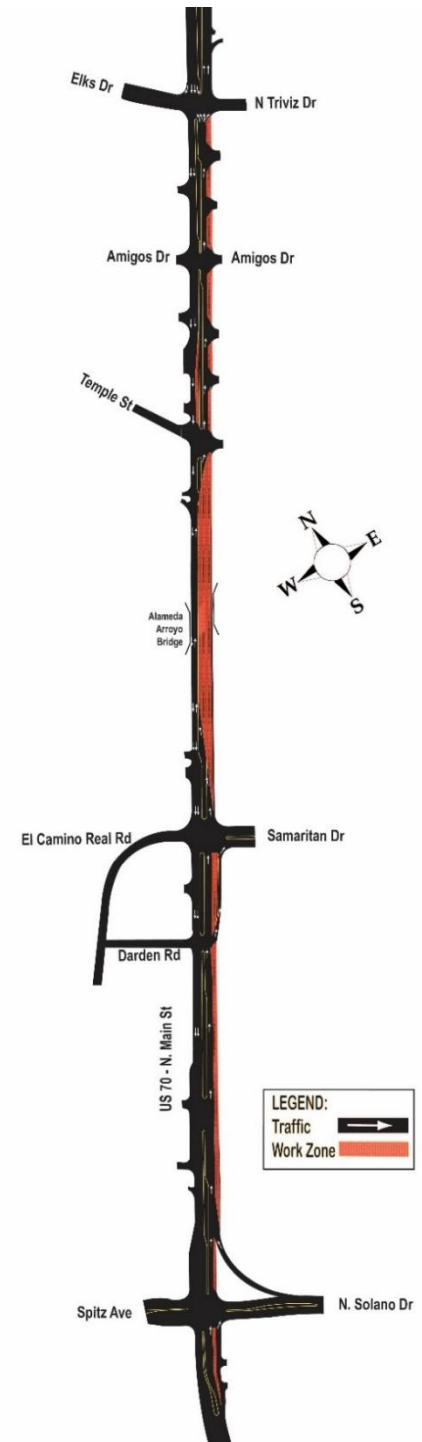
Construction continues on a project to make roadway improvements to US 70 North Main Street between the intersection of Spitz Ave./N. Solano Drive and the intersection of Elks Drive/N. Triviz Drive. Crews have demolished the old bridge and will begin widening the eastbound lanes of the roadway this week. The following traffic impacts remain in place:

- The Alameda Arroyo trail crossing is **CLOSED**.
- One lane of traffic **ONLY** is open on the east side of US 70 from Elks/N. Triviz to Temple and from north of Samaritan to Spitz/N. Solano.
- In the area of the Alameda Arroyo Bridge, there is only one lane of traffic open in each direction (eastbound and westbound) on the west side of the roadway.
- There are two lanes open on the west side of US 70 from Elks Drive/N. Triviz to south of Temple and from south of the Alameda Arroyo Bridge to Spitz/N. Solano.

This phase of construction is expected to last about four (4) months, through **May 2024**, and will be followed by two additional phases, with the project scheduled to be completed in **October 2024**.

Regular work hours are **Monday-Friday 7 a.m.-5 p.m.**, although the contractor may work longer hours or on weekends if needed.

The speed limit will be 35 miles per hour throughout the construction zone. Motorists are encouraged to be patient, expect delays and look out for construction crews and equipment.



Stay in the Loop! Get info or sign up for free construction updates
at www.us70mainstreet.com or get info at www.nmroads.com